

# Warwick Production

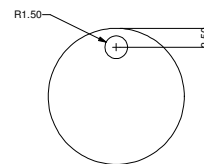
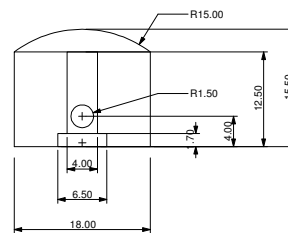
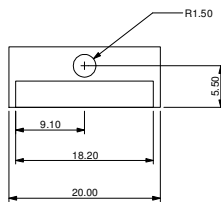
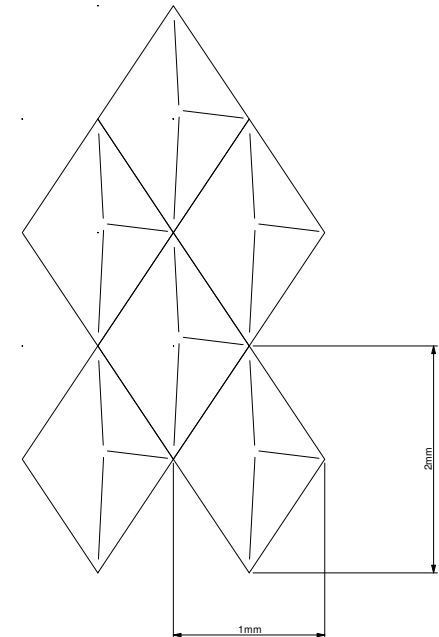
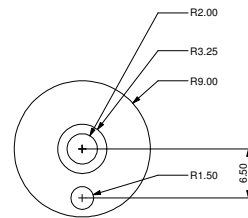
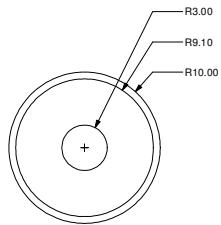
Stacked knob with curved top  
 X 30515 / X 30516 / X 30517 / X 30518

Scale 1:1  
 Dimensions in mm

2 set screws: M3, 6mm Allenkey

X 30515 BKT  
 X 30516 GDT  
 X 30517 SCT  
 X 30518 CRT

Convex pattern on side wall:  
 (Top without pattern!)



X 30515 BKB  
 X 30516 GDB  
 X 30517 SCB  
 X 30518 CRB



Warwick GmbH & Co. Music Equipment KG  
 Gewerbegebiet Wohlhausen  
 D-08258 Markneukirchen  
 Tel: +49 (0) 37422 555 0  
 Fax: +49 (0) 37422 555 99

13.11.2011

Domespeedknobs stacked top + bottom