



Installation Manual

BU3C Battery Replacement Kit for Xvive U3 Condenser Microphone Wireless System



Both the U3 wireless transmitter and receiver are equipped with a rechargeable lithium-ion battery. This battery may lose some or all of its power capacity after extended use or when left in storage for a long period of time without being recharged. The BU3C Battery Replacement Kit includes new lithium-ion batteries to replace the expended batteries in your U3 set.

Replacing the batteries requires opening the U3 transmitter/receiver. You can perform this operation yourself or ask a technician for electronic devices to help you out. Be careful and patient to prevent damaging the case or the PCB inside. Some parts that may get damaged in the process are provided as new spares in the kit.



The battery replacement procedure is demonstrated in a video you can watch online:
<https://www.youtube.com/watch?v=kspc5f4WPiE>

Content of the kit

- 1 x replacement transmitter battery 3.7 V, 1000 mAh, 3.7 Wh
- 1 x replacement receiver battery 3.7 V, 860 mAh, 3.18 Wh
- 1 x replacement receiver antenna cap
- 1 x replacement transmitter antenna cap
- 2 x double-sided adhesive tape
- 1 x screwdriver

Required tools

- a pair of pliers (needle-nosed or lineman)

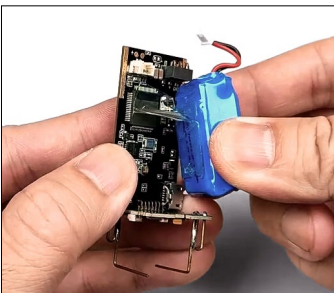
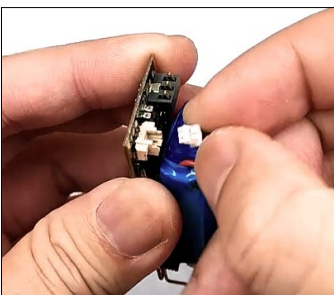
Receiver battery replacement (U3R)

Step 1: Remove the cover



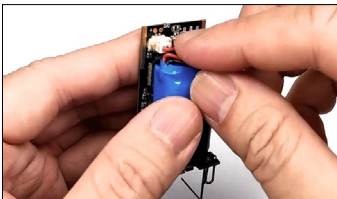
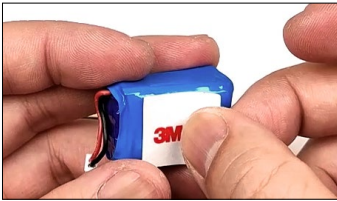
- Note the orientation of the XVIVE label on the antenna cap in relation to the other components (buttons, other labels). The cap needs to be re-installed in the same orientation. (Take a picture with your phone).
- Grab the antenna cap (top part of the shell) with a pair of pliers while holding the U3 unit in the other hand. Carefully twist the cap until it comes loose and slowly pull it off. Make sure the black ring does not get caught on the antenna components inside.
Note: The antenna cap may get damaged during removal. It can be replaced with a new cap included in the kit.
- Note the way the black ring is positioned on the cap and then remove it from the cap.
- Carefully pull the plastic cover with the "Receiver" label off the metal part of the unit. To do so, pry the lower ends (near the connector) slightly up (use fingernails or a guitar pick) until you can pull the cover off
- Remove the button panel by carefully placing a fingernail or guitar pick under the edge and pulling it towards you.
- Remove the switch button by pulling it off.
Caution: Keep the button and all other parts safe for later reinstallation.
- Pull out the PCB board and the battery. Note the position of the battery.

Step 2: Remove the old battery



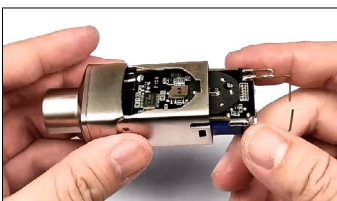
- Make sure the unit is turned off and unplug the battery connection. Carefully wiggle and pull on the connector with your fingers or a pair of needle nose pliers until it comes off.
- The battery pack is attached to the board with adhesive. Hold the PCB board with one hand and slowly and carefully and slowly wiggle, twist and pull on the battery pack to pull it off the board.
WARNING: Do not use sharp or metal tools to pry the old battery loose. If you puncture the battery, it may short internally and may cause a fire! Sharp objects could also scratch the PCB board and interrupt connections.
- Remove any residue from the adhesive from the PCB board.
- Take the black foam pad off the old battery.
- Dispose of the old battery according to your local regulations.

Step 3: Install the new battery



- The 860 mAh battery from the kit is installed in the receiver. Check the labeling and be sure to select the correct battery.
- Apply new double-sided adhesive tape (included) to the new battery. Pay attention to the correct side (see old battery).
- Stick the new battery to the board – in the same position as the old battery.
- Make sure the unit is still turned off and connect the battery cable. The connection is keyed and can only be plugged in one way. Check the proper alignment of the plug and do not force it in if it is misaligned.
- Put the black foam pad back in the same position as on the old battery.
- Position the cables in a way that they cannot get caught when you re-insert the PCB+battery into the metal casing.

Step 4: Re-install the cover



- Insert the PCB with the new battery into the metal casing. Pay attention to the orientation: the button/switch side must be on the side where you removed the button panel, the charging port must be inserted into the corresponding slot on the side.
- Re-install the switch button. The wider part must point in the direction of the U3 connector.
- Re-install the button panel. Carefully push it down until it clicks into position.
- Test the ON/OFF switch. The LED should light up. Check that the switch can move freely and that the channel button can move and clicks. The switch should turn the unit on/off and the channel button should work as advertised.
- Install the plastic shell and align it with the USB charging port. Make sure you do not bend the antenna wires.
- If the antenna cap got damaged during removal, use the new cap from the kit and re-install the black ring on it. Make sure to position the ring the same way as it was installed on the old cap. If you hold the cap so that you can read the XVIVE label, the part of the black ring with the two prongs on each side of the notch goes to the side where the "X" of XVIVE is.
- Do not install the antenna cap yet. Test the function of the U3 receiver on your system. You can install the cap after you have verified that the U3 functions properly.
- Make sure the wires of the antennae have not been bent during the process. They need to stand straight up; bend at right angles and the upper parts of the wires need to be in parallel with each other.
- Make sure you position the antenna cap in the same orientation you noted in step 1 before you removed it. Make sure the four latches (one on each side) slide into the corresponding slots. Carefully push the cap on until it clicks into place.

This completes the battery replacement for the U3 receiver. Please connect the U3 to a proper charger and fully charge the new battery.

Transmitter battery replacement (U3C)

Step 1: Remove the cover



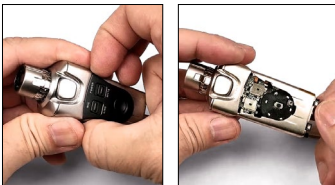
- Grab the antenna cap (top part of the shell) with a pair of pliers while holding the U3 unit in the other hand. Carefully wiggle the cap until it comes loose and slowly pull it off. Pay attention not to damage the black ring with the small LED lenses on the edge of the cap. Make sure the antenna under the cap does not get bent. **Note:** The antenna cap may get damaged during removal. It can be replaced with a new cap included in the kit.



- Remove the black ring with the LED lenses from the cap.
- Carefully pull the plastic cover off the metal part of the unit.



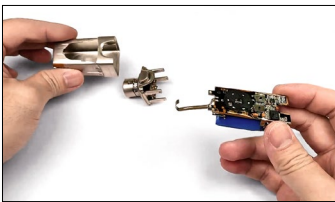
- Use the screwdriver in the kit to remove the four screws from the metal shell. Keep the screws in a safe place.
- Remove the button panel by carefully placing a fingernail or guitar pick under the edge and pulling it towards you.



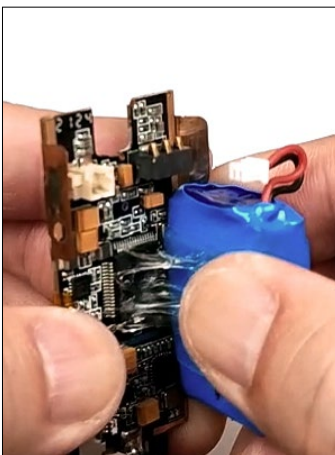
- Remove the switch buttons by pulling them off. **Caution:** Keep the buttons and all other parts safe for later reinstallation.
- Hold the connector end of the U3 transmitter with one hand and carefully and slowly pull the connector end out of the metal shell.



- Carefully and slowly pull out the PCB with the battery towards the connector end and out of the metal shell. Note the position of the battery.

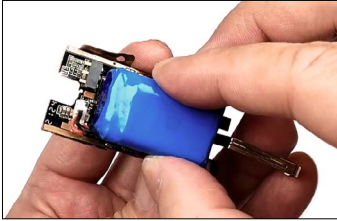
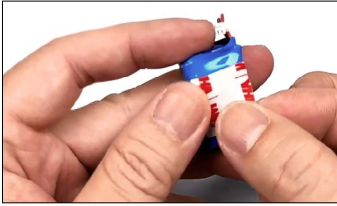


Step 2: Remove the old battery



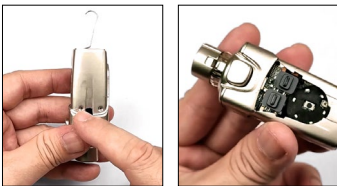
- Make sure the unit is turned off and unplug the battery connection. Carefully wiggle and pull on the connector with your fingers or a pair of needle nose pliers until it comes off.
- The battery pack is attached to the board with adhesive. Hold the PCB board with one hand and slowly and carefully and slowly wiggle, twist and pull on the battery pack to pull it off the board. **WARNING: Do not use sharp or metal tools to pry the old battery loose. If you puncture the battery, it may short internally and may cause a fire! Sharp objects could also scratch the PCB board and interrupt connections.**
- Carefully remove any residue from the adhesive from the PCB board.
- Take the black foam pad off the old battery.
- Dispose of the old battery according to your local regulations.

Step 3: Install the new battery



- The 1000 mAh battery from the kit is installed in the transmitter. Check the labeling and be sure to select the correct battery.
- Apply new double-sided adhesive tape (included) to the new battery. Pay attention to the correct side (see old battery).
- Stick the new battery to the board – in the same position as the old battery.
- Make sure the unit is still turned off and connect the battery cable. The connection is keyed and can only be plugged in one way. Check the proper alignment of the plug and do not force it in if it is misaligned.
- Put the black foam pad back in the same position as on the old battery.
- Position the cables in a way that they cannot get caught when you re-insert the PCB+battery into the metal casing.

Step 4: Re-install the cover



- Insert the PCB with the new battery into the metal casing. Pay attention to the orientation: the button/switch side must be on the side where you removed the button panel, there is a ledge inside the metal shell on which the PCB board should sit, the charging port must be inserted into the corresponding slot on the side.
- Re-insert the connector end of the unit. Due to the latch button, this part can only be inserted on one way.
- Re-install the four screws.
- Re-install the switch buttons. The wider parts must point away from the connector end of the U3.
- Re-install the button panel. Carefully push it down until it clicks into position. Make sure the latch at the end is properly inserted into the corresponding notch.
- Test the switches. The LED under the button should light up. Check that the switches can move freely and that the button can move and click.
- Install the plastic shell and align it with the USB charging port. Make sure you do not bend the antenna.
- If the antenna cap got damaged during removal, use the new cap from the kit and re-install the black ring on it. There is an arrow on the bottom of the antenna cap. The LED lenses in the black ring must be positioned where the arrow is pointing.
- Do not install the antenna cap yet. Test the function of the U3 transmitter on your system. You can install the cap after you have verified that the U3 functions properly.
- Make sure the antenna was not bent during the process. It needs to stand straight up and easily fit into the antenna cap.
- Position the antenna cap in a way that the LED lenses in the black ring end up over the two small protruding from the board. Make sure the four latches (one on each side) slide into the corresponding slots. Carefully push the cap on until it clicks into place. Verify that there is no gap between cap and the rest of the casing all around.

This completes the battery replacement for the U3. Please connect the U3 to a proper charger and fully charge the new battery.

Safety instructions for rechargeable lithium-ion batteries

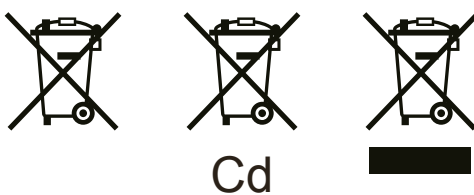
- Handle batteries carefully, keep them away from heat sources, moisture and sharp objects. Do not drop, crush, damage or dismantle them in any way.
- If abused or misused, rechargeable batteries may leak. In extreme cases, they may even present a risk of explosion, fire, heat, smoke or gas. Never use damaged batteries.
- Keep batteries away from children.
- Only charge rechargeable batteries with the chargers recommended by Xvive.
- Observe the correct polarity when installing the batteries.
- Pack/store rechargeable batteries in a way that the terminals cannot come in with contact each other (danger of shorting / fire hazard).
- Switch battery-powered devices off when they are not used.
- Only charge rechargeable batteries at ambient temperatures between 10°C – 40°C (50°F – 104°F).
- When you are not using devices with rechargeable batteries for extended periods of time, charge them regularly (about every three months).
- Do not heat batteries above 60°C / 140°F. Do not expose them to direct sunlight or throw them into a fire.
- Only use rechargeable batteries specified by Xvive.
- Store batteries or devices containing rechargeable batteries in a cool and dry place at room temperature (approx. 20°C / 68°F).

Disposal of used batteries

When disposing of old products and batteries, please help save valuable resources and prevent any possibilities of side effects on human health and the environment. Please take old battery-powered products and/or used batteries to proper collection places and comply with your national legislation. Directives 2012/19/EU and 2006/66/EC apply for EU countries.

Do NOT dispose batteries of any kind with general household garbage.

Contact your local authorities for information about the proper disposal of old products and used batteries.



Note: The manufacturer reserves the right to change these specifications without notice.