

# BU2

## Installation Manual

### BU2 Battery Replacement Kit for Xvive U2 Guitar Wireless System



Both the U2 wireless transmitter and receiver are equipped with a rechargeable lithium-ion battery. This battery may lose some or all of its power capacity after extended use or when left in storage for a long period of time without being recharged. The BU2 Battery Replacement Kit includes new lithium-ion batteries to replace the expended batteries in your U2 set.

Replacing the batteries requires opening the U2 transmitter/receiver. You can perform this operation yourself or ask a technician for electronic devices to help you out. Be careful and patient to prevent damaging the case or the PCB inside. Some parts that may get damaged in the process are provided as new spares in the kit.



The battery replacement procedure is demonstrated in a video you can watch online:

[https://www.youtube.com/watch?v=P1\\_ZIDJ4-JA](https://www.youtube.com/watch?v=P1_ZIDJ4-JA)

#### Content of the kit

- 2 x replacement battery 3.7 V, 650 mAh, 2.4 Wh
- 2 x replacement collar piece
- 2 x replacement cover piece
- 2 x double-sided adhesive tape
- 1 x screwdriver

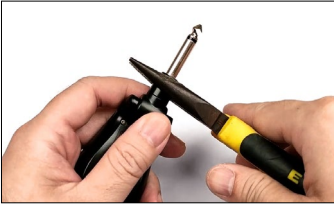
#### Required tools

- a pair of pliers (needle-nosed or lineman)

#### Battery replacement

The kit includes new batteries for both devices of the U2 Set (transmitter and receiver). The shells of the two devices are of similar construction. The following instructions therefore apply to both devices.

### Step 1: Remove the cover



- Grab the collar with a pair of pliers while holding the U2 unit in the other hand. Carefully twist the collar until it comes loose and pull it off over the connector piece. **Note:** The collar and the connector cover may get damaged during removal. They can be replaced with new parts included in the kit.



- Use the provided screwdriver to remove the 3 screws. Keep the screws in a safe place.

- Remove the front and back connector covers.



- Carefully remove the spacer rings from the swivel assembly. Note the way they are installed. One can be pulled off completely, the other one must be pulled off, but remains on the audio cable.



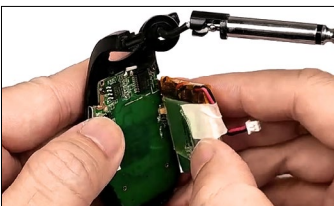
- Gently tug on the audio cable to open a small gap between the two main cover pieces. Use your fingernails, a guitar pick or a small, flat screwdriver to carefully widen the gap all around until you can separate the two cover pieces. Take the back cover off. The PCB board with the battery remains attached to the front cover piece.

**Caution:** The channel button may fall out when you separate the covers. Keep the button and all other parts safe for later reinstallation. Note the positions and the orientation of the channel button and the switch. They need to be re-installed the same orientation. (Take a picture with your phone).

### Step 2: Remove the old battery



- Make sure the unit is turned off and unplug the battery connection. Carefully wiggle and pull on the connector with your fingers or a pair of needle nose pliers until it comes off.

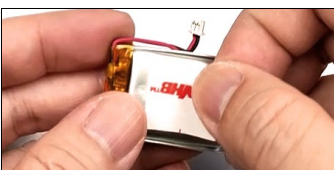


- The battery pack is attached to the board with adhesive. Hold the PCB board down with one hand and slowly, carefully and gently wiggle, twist and pull on the battery pack to pull it off the board. Be patient and keep holding the PCB down while you pull on the battery.

**WARNING: Do not use sharp or metal tools to pry the old battery loose. Avoid damaging the battery and the PCB.**

- Remove any residue from the old adhesive from the PCB board.

### Step 3: Install the new battery



- Apply new double-sided adhesive tape (included) to the new battery. Pay attention to the correct side (see old battery).



- Stick the new battery to the empty space on the board, directly below the chip. Keep the battery cable on the side where it plugs in.

- Make sure the unit is still turned off and connect the battery cable. The connection is keyed and can only be plugged in one way. Check the proper alignment of the plug and do not force it.

- Use the on/off switch to turn the unit on, check the LED indication and turn the unit off again.

#### Step 4: Re-install the main cover



- Put the switch and the channel button back in their proper positions on the front part of the cover and make sure they are properly seated. The two prongs on the channel button should point up and align with corresponding slots in the back cover.
- Make sure the audio cable is positioned in its proper channel in the swivel joint.
- Place the back cover on top of the front cover. Make sure it is positioned correctly. The cover should click on easily. If not, please re-check the alignment of all components. Do not use excessive force to close the cover. Make sure the cover properly closes all around.
- Check that the switch can move freely and that the channel button can move and clicks. The switch should turn the unit on/off and the channel button should work as advertised.
- Re-install the screws. The two shorter screws are for the main cover. Do not over-tighten the screws.
- Re-Install the two spacer rings for the swivel joint. Start with the ring on the audio cable. The rings are keyed with notches and will stay in place when properly positioned. The rings must be installed with the flat side facing the connector side of the swivel mechanism – check the ring on the audio cable for reference.

#### Step 5: Install the cover for the audio-connector



- Replace the parts that got damaged during disassembly with new parts from the kit.
- First, attach the front-side connector cover (the one without a screw hole). This part has a pin on the inside. Position the cover on the spacer rings. Place the audio connector inside the cover and position it so the hole in the plastic part of the audio connector plugs securely onto on the pin in the cover.
- Place the back cover over the front cover. Make sure the connector is properly positioned and the cover pieces join all around without the need to apply force. The connector plug should not be able to move or rotate inside the connector covers.
- Re-install the remaining screw. Do not over-tighten it.
- Do not install the collar yet! Test the swivel function of the connector first. Also test the function of the U2 on your guitar and amplifier. You can install the collar after you have verified that the U2 functions properly.
- Slide the collar over the audio connector. Make sure the slot is positioned over the back connector cover and slides over the corresponding protrusion on the connector cover. Snap the collar in place to secure the components of the swivel assembly.

This completes the battery replacement for the U2. Please connect the U2 to a proper charger and fully charge the new battery.

## Safety instructions for rechargeable lithium-ion batteries

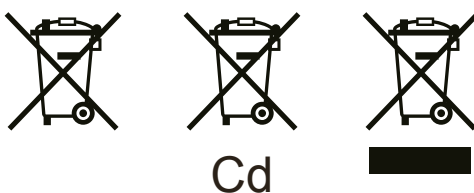
- Handle batteries carefully, keep them away from heat sources, moisture and sharp objects. Do not drop, crush, damage or dismantle them in any way.
- If abused or misused, rechargeable batteries may leak. In extreme cases, they may even present a risk of explosion, fire, heat, smoke or gas. Never use damaged batteries.
- Keep batteries away from children.
- Only charge rechargeable batteries with the chargers recommended by Xvive.
- Observe the correct polarity when installing the batteries.
- Pack/store rechargeable batteries in a way that the terminals cannot come in with contact each other (danger of shorting / fire hazard).
- Switch battery-powered devices off when they are not used.
- Only charge rechargeable batteries at ambient temperatures between 10°C – 40°C (50°F – 104°F).
- When you are not using devices with rechargeable batteries for extended periods of time, charge them regularly (about every three months).
- Do not heat batteries above 60°C / 140°F. Do not expose them to direct sunlight or throw them into a fire.
- Only use rechargeable batteries specified by Xvive.
- Store batteries or devices containing rechargeable batteries in a cool and dry place at room temperature (approx. 20°C / 68°F).

## Disposal of used batteries

When disposing of old products and batteries, please help save valuable resources and prevent any possibilities of side effects on human health and the environment. Please take old battery-powered products and/or used batteries to proper collection places and comply with your national legislation. Directives 2012/19/EU and 2006/66/EC apply for EU countries.

Do NOT dispose batteries of any kind with general household garbage.

Contact your local authorities for information about the proper disposal of old products and used batteries.



Note: The manufacturer reserves the right to change these specifications without notice.