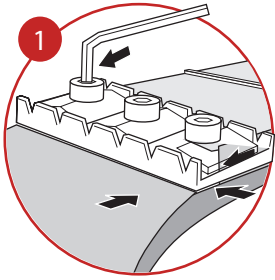
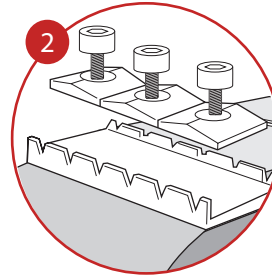


UNLOCKING NUT INSTALLATION GUIDE



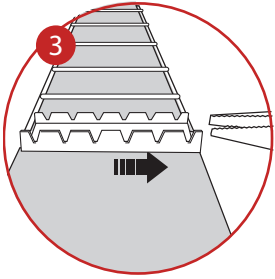
STEP 1

Remove the strings. Score around every edge of the nut with an exacto knife to prevent lacquer sticking to the nut or the neck and chipping away.



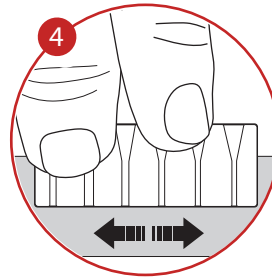
STEP 2

If the nut is not sitting in a slot, usually a light tap with a small block will set it free. If it is sitting in a slot, gently tap it out sideways using a hammer and a screwdriver.



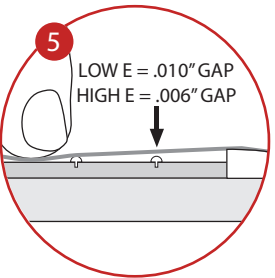
STEP 3

When it is sticking out the side, pull it out in the same direction with a pair of pliers, like you would a tooth. Scrape or file the nut slot free from old glue and finish residue while making sure that the slot remains square.



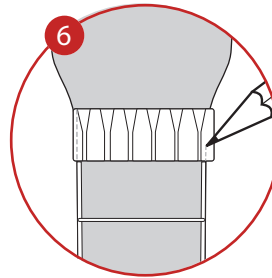
STEP 4

See if your new Graph Tech nut fits into the slot without force. If it's too thick, place a 400 to 600 grit sand paper up on a flat surface and sand down the sides of the nut until it fits in the slot snugly, but is easily removable.



STEP 5

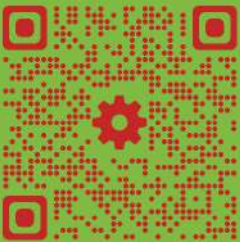
Restrict the high and low E strings and tune to pitch to check for correct height. Pushing down on the third note of the low E string should result in a .010" gap between the string and the first fret; high E string should be .006"



STEP 6

Once you've adjusted the thickness and the height, you just need to sand the ends of the nut so that they are flush with the neck. Just use a pencil and mark the ends of the nut that are sticking out, remove it from the neck and sand it to your marks.

“And for the perfect complement with the Un-Lock Nut....”



RAT:O

Total Control & Precision
Locking Machine Heads

Website:
www.graphtech.com

Support:
support@graphtech.com

Tel Support:
604-940-5353 ext 130

For downloadable
Templates,
measurements,
and instructions for
Graph Tech products
click on support on the
top menu on the website.

