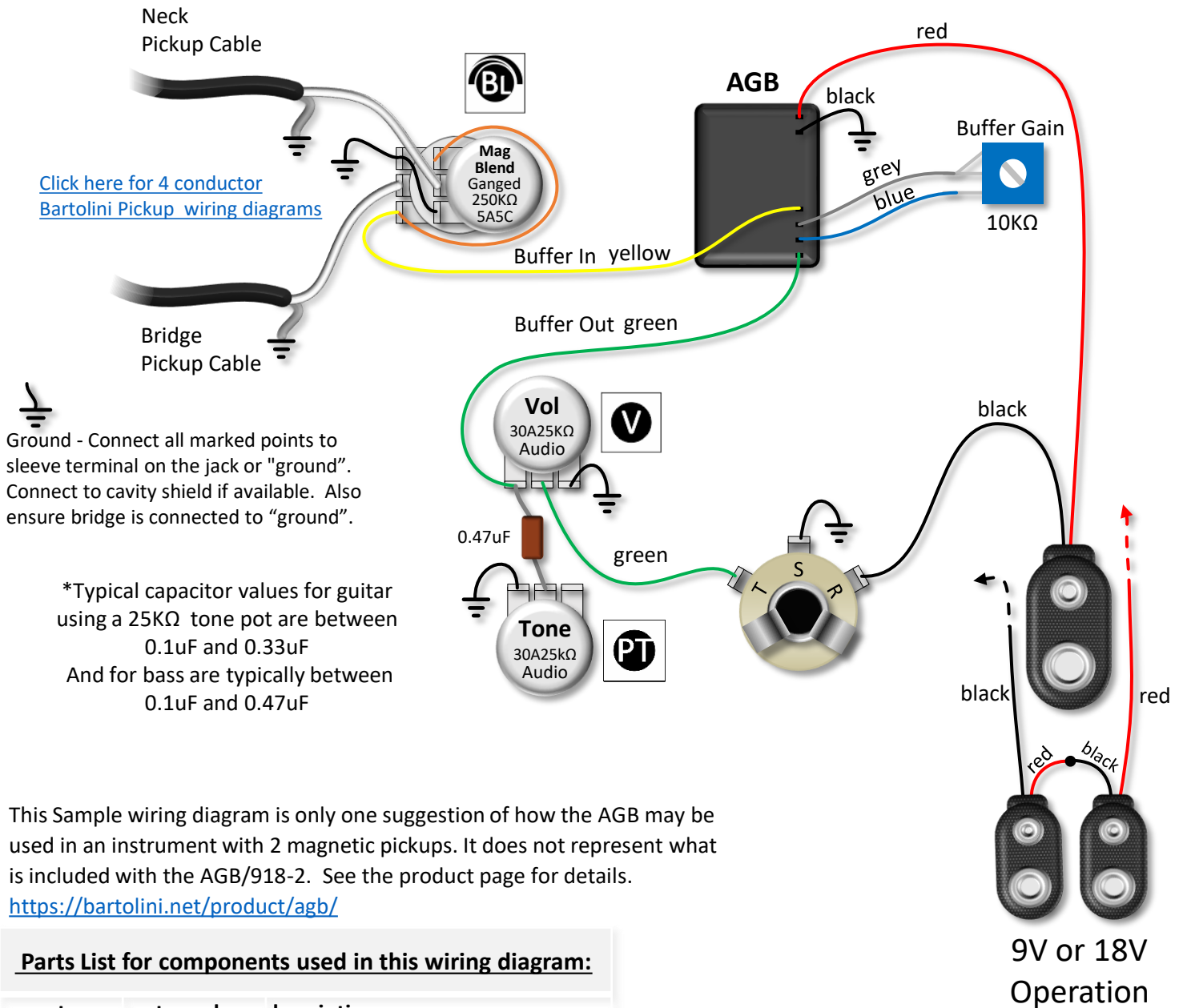


Adjustable Gain Buffer for +9V or +18V operation

This diagram shows one way to connect an **AGB/918** to 2 passively blended magnetic pickups with active volume and tone controls.



Parts List for components used in this wiring diagram:

qty	part number	description
1	AGB/918-2	AGB/918-2 w/Gain trimmer
1	10K-TRIM-H	10KΩ Gain Trimmer
1	250K-ACX-KP	250KΩ 5A5C Ganged Blend Pot
2	25K-30A-KP	25KΩ 30% Audio Taper Pot
1	CAP-474-C	*0.47uF Ceramic Capacitor
1	JACK-TRS-L	¼" Stereo Jack
2	9V-Clip	9-Volt Battery Clips

The negative side of the battery(ies) should be connected to the jack ring so that power is turned on only when the plug is in. Unplug the instrument when not in use to conserve your battery.

DO NOT USE MORE THAN 18 VOLT SUPPLY VOLTAGE OR EXTERNAL POWER SUPPLIES